



TIMBERLANDS
Pacific

**Forest
Management Plan
Public Summary
Timberlands Pacific Pty Ltd**



Contents

Contents	2
Introduction.....	4
Implementation.....	5
Resource Description.....	6
Silvicultural Regimes.....	6
Operating Controls	6
Inventory	6
Research and Development	7
Governance	7
Anti-Corruption Commitment	8
Management of Environment, Safety and Health.....	8
Policy.....	8
Objectives and Targets	8
Certification	8
Commitment to FSC® Principles	8
Environmental Assessment and Management.....	9
High Conservation Values.....	9
Remnant Native Vegetation	10
Carbon Storage.....	11
Health and Safety	11
Social responsibilities	11
Employment	11
Community	12
Reconciliation Action Plan.....	12
Native Title	12
Adjacent Lands	12
Stakeholder Engagement	13
Dispute Resolution	13
Illegal Activities.....	13
Rubbish	13
Unplanned Fire	13
Other.....	14
Contact details.....	14
The Management Team	14
Office Address	14
Penola Plantations.....	14
Taswood Estate.....	14
Email	14
Website.....	14

Timberlands Pacific acknowledge the Traditional Owners of the land on which we operate. We pay our respects to their Elders, past, present and emerging and the continuation of their cultural, spiritual and educational practices.

This is a controlled document. Only the approved version available on the Timberlands Pacific Pty Ltd (TPPL) SharePoint is the authorised version. TPPL does not take any responsibility or ownership over any other unauthorised copy.

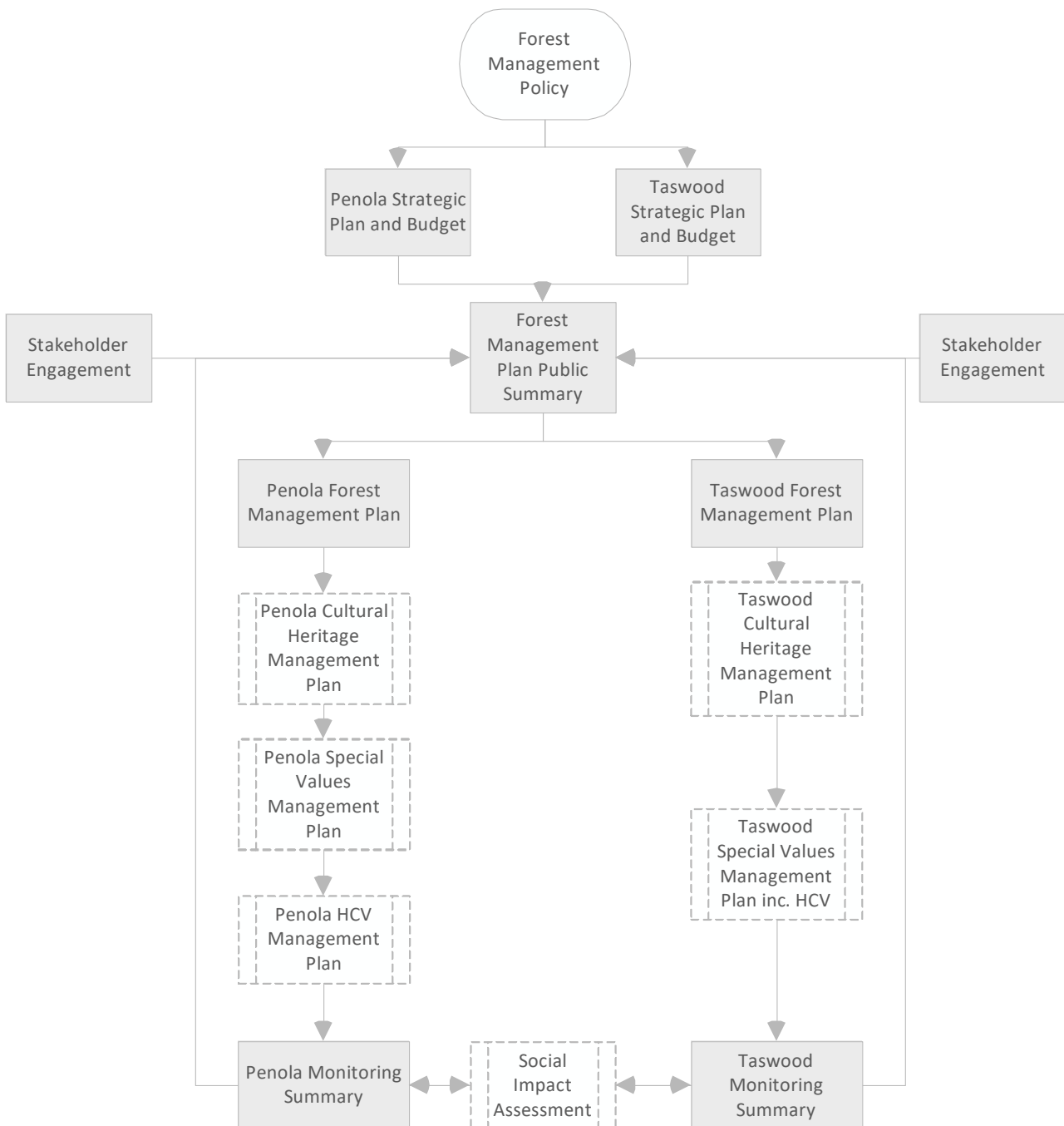
Forest Management Plan Summary
Version: 23.0 8/08/2023
Document Owner: People and Culture Manager

Introduction

Timberlands Pacific Pty Ltd (TPPL) is a forest management company, currently managing over 100,000 hectares across two forest estates in Tasmania and the Green Triangle region of South Australia and Victoria.

The purpose of this Forest Management Plan (FMP) is to provide an overview of the two estates, the activities TPPL manages and their compatibility with the Responsible Wood Certification Scheme which is underpinned by the Australian Standard for Sustainable Forest Management (AS 4708:2013) and the Principles and Criteria outlined by the Forest Stewardship Council® (FSC®) (FSC-C115692).

The complete FMP is a collection of documents as identified in the below chart.



The **Taswood Estate** is approximately 54,000 hectares of principally *Pinus radiata* plantations located on Permanent Timber Production Zone (PTPZ) land across northern Tasmania. While the **Penola Plantations** is

approximately 47,000 hectares of *Pinus radiata* in the Green Triangle region of south east South Australia and western Victoria.

Forest management covers the full range of productive and non-productive forestry activities including plantation establishment, silviculture, harvesting and wood sales as well as conservation management and community engagement.

Management activities strive to contribute to environmental, social, economic and regional development. TPPL currently employs 45 staff who collectively have the expertise and experience to effectively manage all aspects of forest activities. There are 27 staff based from the Launceston office in Tasmania and 18 at the Mount Gambier office in South Australia. Timberlands Pacific's commitment to regional development is demonstrated through contracting more than 60 local companies to conduct forestry activities in both estates. In total, the estates contribute over \$45 million to the Tasmanian and over \$40 million to the Green Triangle economies.

Operations are governed by a rigorous risk management framework. The Management of Environment, Safety and Health (MESH) System is embedded into the whole business allowing the assessment, quantification and mitigation of all relevant risks whilst maintaining legal compliance and identifying improvement opportunities.

As required by the certification standards, the current version of the Forest Management Plan (FMP) and other relevant referenced documents can be requested via Timberlands Pacific's website (www.tppl.com.au). There are specific Forest Management Plans for each Estate. They contain more detailed information on Timberlands Pacific's forest management than described in this summary document. Further information may be provided on request.

Implementation

Timberlands Pacific has a management system framework that includes a comprehensive set of controlled documents and records. Key documents are policies, procedures, plans and contractual agreements. Databases are maintained to record and analyse various types of information including finances, forest inventory, planning, monitoring and auditing, incidents and communications.

FMPs are periodically reviewed, with potential updates arising from the MESH, improvement project outcomes, scientific or technical enhancements, legislative changes, external audit outcomes and stakeholder consultation. Timberlands Pacific continually engages with surrounding communities, conscious of potential environmental, social or economic impacts of the estates and strive to be consultative and considerate in future planning of forest management activities.

Resource Description

The Defined Forest Area (DFA) under management consists of the Taswood Estate and Penola Plantations. DFA maps can be found on the [website](#). Table 1 shows a breakdown of each Estate as of 31 March 2023.

Table 1. Area of Estates

Estate	Reserve Area (ha)	Non Production (ha)	Production (ha)	Total (ha)
Taswood Estate	8,784	1,164	44,335	54,793
Penola Plantations	2,195	2,294	42,511	47,099
Total	10,979	3,458	86,846	101,892

Planning

A comprehensive planning process determines how and when to harvest the resource. Long term harvest profiles are developed from forest estate models. This is translated into an annual cut sheet dictating the harvest schedule, crew movements and importantly Timber Harvest Plans and Forest Practices Plans planning and development process. In Tasmania, there is also a three year plan as required by the Forest Practices Act.

Harvest Plans consist of multiple processes:

- Forest estate models to determine available wood volumes and products;
- Annual stand schedule to allocate volumes to contractors and customer/markets;
- Timber Harvest or Forest Practices planning process;
- Forest road maintenance; and
- Monitoring and audits of operations to ensure compliance with service provider contracts, internal environmental, health and safety policies and local forest practices codes.

All harvesting activities use mechanised falling and extraction techniques. Hand felling is only used in areas that are mechanically inaccessible.

Silvicultural Regimes

Both estates are managed to provide the future market with a continuous supply of a range of wood products, predominantly sawlog. To achieve this, Timberlands Pacific follows site specific operational deployment principles and best practice guidelines in implementing improved genetics, seedling production, land preparation, planting, fertilising and thinning regimes. The key drivers supporting these regimes are forest owner strategic directions, maintaining a critical mass of target market products, risk mitigation strategies, return on investment, availability of resources and site productivity.

Operating Controls

TPPL have stringent specifications and/or prescriptions for contractors to follow for operational activities in the forest. TPPL carries out regular monitoring and auditing of these activities to ensure compliance including quality control sampling, environmental and safety checks and contractor system audits.

Inventory

TPPL completes an extensive forest inventory program annually that is targeted at specific age classes throughout the whole rotation. All programs use prescribed methodologies that are systematic, methodical and adhere to scientific mensuration principles. The key measurement points are at establishment, six months old, three years old, 10 years old, post thinning, 20 years old and prior to harvesting.

Permanent sample plots are measured over time to validate and refine the growth models developed from the inventory and plot imputation methodologies.

Research and Development

Four broad themes are focussed on in determining research and development priorities. They are improving the quality of targeted tree products, reducing forest risk, reducing costs through efficiency and technology transfer and increasing site productivity.

Timberlands Pacific participates in several forest industry collaborative projects on behalf of the forest owner. Partners include State and Commonwealth governments and organisations such as the Forest and Wood Products Association (FWPA), Australian Research Council, Southern Tree Breeding Association and Radiata Pine Breeding Company.

An internally managed research and development program is aimed at addressing identified key business, environmental and safety risks or opportunities for improvement.

Governance

Timberlands Pacific operates in accordance with all relevant State and Commonwealth Acts and Regulations. In addition, management planning and deployment programs incorporate the requirements of specific codes of practice and industry guidelines. A register of these requirements is maintained.

Anti-Corruption Commitment

Timberlands Pacific will not offer or receive bribes in money or any other form. TPPL is committed to ensuring all of its business is free of corruption, through transparent processes and dealings, and shall comply with any and all anti-corruption legislation. Any corruption observed will immediately be reported to Police.

Management of Environment, Safety and Health

Policy

Timberlands Pacific's current forest management policy is available on the [website](#).

Objectives and Targets

A mechanism for achieving continual improvement throughout the business is setting and delivering on ambitious, but achievable objectives and targets.

Strategic Plans lay out the business improvement objectives, while environmental, safety and health objectives are established and tracked through the MESH process. The MESH objectives and targets focus on mitigating risk or leveraging opportunities for the business. Examples are:

- Reduction of the risk posed by significant impacts or hazards;
- Reduction of specific health and safety risks such as transport incidents and hazardous manual tasks in silvicultural operations;
- Improved management of specific environmental issues such as flooding and erosion; and
- Reduction of fire risks.

Certification

The following forest management certifications are maintained:

- **Responsible Wood Certification Scheme (Australian Standard for Sustainable Forest Management AS 4708:2013)**. The Taswood Estate has been certified since 2008 and the Penola Plantations since November 2012. Certificate code SCS-RW-004. This standard is mutually recognised by the Program for the Endorsement of Forest Certification Schemes (PEFC).
- **Forest Stewardship Council 'Well Managed Forest Certification' (FSC®)**. Both the Taswood Estate and Penola Plantations have been certified since December 2013. Certificate Code: SCS-FM/COC-004554.

Timberlands Pacific are committed to ongoing sustainable forest management.

Commitment to FSC® Principles

Systems are implemented to ensure:

- There are the appropriate permits and plans in place to ensure all forest products are legally sourced and harvested and that Timberlands Pacific does not trade in any illegal wood or forest products;
- Forest operations do not violate the traditional or human rights of communities within or surrounding the estates;
- High Conservation Values identified within the estates are not destroyed;
- There is no significant conversion of forests to plantations or non-forest uses post 1996;
- No genetically modified seed or plant material is used within the estates; and
- There are no violations of International Labour Organisation (ILO) Core Conventions, as defined in the ILO Declaration on Fundamental Principles and Rights at Work (1998).

Environmental Assessment and Management

As part of the planning process, an environmental assessment is undertaken prior to an operational activity taking place. This identifies any special values such as native vegetation, soil or water values, threatened or endangered flora and fauna and/or areas of cultural significance.

Legislation differs significantly between the two estates. Site specific details of the planning, identification and implementation of special values management is discussed in each estate's **Special Values Management Plan**.

High Conservation Values

As part of its management activities Timberlands Pacific maintains and enhances high conservation values (HCV). TPPL has used existing knowledge, special values evaluation processes, assessments of available databases (internal and external) and where necessary, specialist advice.

HCVs identified within the Taswood Estate and Penola Plantations are listed in Table 2 and Table 3.

Management strategies used to maintain or enhance identified areas include:

- Exclusion from operational activities;
- Compliance with forestry guidelines and codes of practice;
- Management systems;
- Control of pine wildlings;
- Control of noxious weeds;
- Staff training and awareness;
- Consultation with relevant authorities and stakeholders;
- Routine monitoring; and
- Undertaking management works as identified through monitoring activities.

Table 2: HCVs identified within the Taswood Estate

HCV Class	Location	Ecological Class	Nature Conservation Act 2002	Regional Forest Agreement 1997	Area (ha)
3	Stoodley	Wetlands	Threatened	Vulnerable	0.25
3	Nicholas (3 sites)	Eucalyptus amygdalina inland forest and woodland on cainozoic deposits	Threatened	Vulnerable	22.05
3	Paradise	Wet viminalis forest	Threatened	Endangered	1.06
3	Beulah, Nicholas, Payanna, Virginstow, Scamander	Eucalyptus ovata forest and woodland	Threatened	Endangered	78.68
4	Fingal Forests, Scamander	South Esk River and Wrinklers Lagoon Catchments	N/A	N/A	9,673

Table 3: HCVs identified within the Penola Plantations

HCV Class	Location	Ecological Class	Environmental Protection and Biodiversity Conservation Act 1999	National Parks and Wildlife Act 1972	Area (ha)
3	Heatherlie	Plains Grassy Woodland + Plains Swampy Woodland	Critically Endangered	Critically Endangered	28.8
3	Fields	Seasonal Herbaceous Wetland, (Plains Grassy Wetland, EVC 125)	Critically Endangered	Critically Endangered	0.9
3	Mingbool	Seasonal Herbaceous Wetland, (Plains Sedgy Wetland, EVC 647)	Critically Endangered	Critically Endangered	0.6
3	Nangwarry South	Seasonal Herbaceous Wetland, (Plains Sedgy Wetland EVC 647 mosaicked with Aquatic Herbland EVC 653)	Critically Endangered	Critically Endangered	7.0
3	Spehr	Seasonal Herbaceous Wetland, (Plains Sedgy Wetland EVC 647, Plains Grassy Wetland EVC 125),	Critically Endangered	Critically Endangered	0.8
3	Werrikoo	Damp Heathland			61.9

Remnant Native Vegetation

Timberlands Pacific recognises the value of retaining and managing biological diversity within each estate. The definitions of remnant native vegetation vary between the two estates, as they are influenced by State legal requirements and their respective management history. Specific definitions are described in each estate's Forest Management Plan.

In general, any remnant native vegetation within the estate boundaries meeting any of the following criteria are considered for protection:

- Individual mature trees that have existing hollows;
- Threatened vegetation communities, where over 80% of the *Pinus radiata* crop trees within the patch have failed (and will not cause significant health and safety or operational issues for following forestry operations);
- Native forest or woodland communities where the over story is generally dominated by natural eucalypt or other native canopy species not felled during the initial conversion to plantation;
- Other vegetation communities such as native grasslands or scrublands where, native grasses, herbs and shrubs consist of greater than 50% of the ground cover and are recognised as being significant or threatened by National or State authorities;
- Large, downed native trees that have the potential to provide dead wood habitat and do not create a safety risk; and

- Wetlands that are permanently or temporarily inundated with fresh water. These areas may support flora and fauna that is dependent on water for at least part of their life cycle i.e. wetland dependant species.

Identified remnant native vegetation is monitored to ensure the surrounding plantation does not degrade its special values. Some types of remnant native vegetation are particularly susceptible to pine wildling incursions, posing a risk to the ecological values of these areas. To manage this annual control programs are maintained in each estate.

Carbon Storage

The estates are not currently traded for carbon however, Timberlands Pacific annually calculates the carbon storage accumulation within the DFAs using the company's growth models and the fund manager's standards.

Health and Safety

Timberlands Pacific is committed to providing a healthy and safe work environment for all employees, contractors, sub-contractors, customers and visitors.

An independent auditor is engaged to ensure TPPL and its contractors are meeting or exceeding legislative and contractual safety standards. These audits assess the effectiveness of the health and safety system policies, planning, implementation, measurement, evaluation and review. Specifically, this includes:

- Commitment to a continual improvement culture;
- Competency of the workforce and related training records;
- Hazard identification and management;
- Plant and equipment maintenance;
- Drug and alcohol policies, procedures and support mechanisms;
- Fatigue management policy and procedure;
- Emergency response procedures;
- Incident reporting and investigation; and
- Adequacy of record keeping.

If standards are not met, corrective actions are put in place to address these shortcomings in an appropriate and timely manner.

Social responsibilities

Employment

High quality forest management requires educated and trained personnel. Employees specialise in managing finances, sales, marketing, health and safety, forest estate modelling, roading, harvesting, transport, fire protection, site preparation, planting, tending and inventory activities. Employees receive ongoing training and are encouraged to continuously improve performance through a review system that precedes a performance based reward and remuneration system.

Timberlands Pacific is an equal opportunity employer and contract manager, encouraging a diversity of backgrounds and experiences within its employees and contractors. Contractors are predominately sourced from regional communities surrounding the estates.

Community

A periodic Social Impact Assessment (SIA) is undertaken, to quantify the impact of operations on surrounding communities. To ensure the effectiveness of the SIA, Timberlands Pacific uses Social Performance Indicators (SPI). The latest Social Impact Assessment is available on the [website](#).

The website also contains information on activities that occur within the estates and details on what is required to hold community and not for profit events. The documents include:

- Penola Plantations Conditions of Entry for Approved Community Events; and
- Taswood Conditions of Entry for Community Use.

Timberlands Pacific seeks to develop and maintain positive relationships with neighbours. The website contains documents outlining responsibilities to neighbours regarding fencing, fire break maintenance and weed control. These documents are:

- Penola Plantations Fencing and Boundary Maintenance Guidelines; and
- Taswood Fencing Setbacks and Boundary Maintenance Guidelines.

Any requests from the public for site or stand specific information or details on internal documentation and procedures are considered by on a case by case basis.

The Timberlands Pacific website is the forum used to communicate public events in the estates. It is also a contact point for general enquiries via enquiries@tppl.com.au.

Reconciliation Action Plan

Timberlands Pacific have a Reconciliation Action Plan (RAP) which is a key element of the commitment to Reconciliation. The RAP builds on the positive steps taken to build relationships and create opportunities for First Nations people. It is an ambitious but sustainable plan that seeks to strengthen relationships with First Nations peoples, communities and employees – to empower social, economic and cultural wellbeing. The RAP document is available at: <https://www.tppl.com.au/reconciliation>.

Native Title

Timberlands Pacific acknowledges that the land and any traditional sites are significant to local First Nations People. If an Indigenous community requests access to the estates for traditional use, Timberlands Pacific will allow it other than for health and safety reasons.

The Taswood Estate is located on PTPZ land and the resource growing is wholly privately owned under a long-term Forestry Right. Any claim on the land would be unlikely to impact on the Forestry Right.

The Penola Plantations is located on freehold land and the resource growing is wholly privately owned.

Adjacent Lands

Both estates are in rural areas with predominantly surrounding land similar in tenure and land use. These areas are identified in the Geographical Information System (GIS) and are sourced for planning and managing forestry operations and other forest activities.

Bordering the Taswood Estate is State forest, PTPZ land reserves, conservation areas and more than 900 privately owned properties. In the Penola Plantations, there is no central cadastre information available in either Victoria or South Australia, so it is difficult to identify all neighbouring property titles. However, there are State reserves and conservation areas while the privately-owned land is generally used for pine or eucalypt plantations, grazing and to a lesser extent agriculture.

Stakeholder Engagement

There is a broad range of organisations, groups and individuals that have an interest or may be affected by Timberlands Pacific business.

Stakeholders are communicated with at strategic and operational levels. Councils are provided with harvesting and transport route plans to enable forward planning of roading infrastructure. Timberlands Pacific endeavours to notify neighbours within 100m of an operational area or along a transport route during the planning of harvesting, mammal control and herbicide applications. This exceeds the minimum legislative requirements in Tasmania (minimum notification 100m from boundary), Victoria and South Australia (where there is no minimum distance or obligation to notify). Land owners beyond this distance may become involved in the consultation process by emailing enquiries@tppl.com.au.

Timberlands Pacific endeavours to comply with the local Good Neighbour Charters. The charters aim to inform both parties of their obligations so when a need arises, the situation does not escalate into a complaint or dispute. They are called the:

- Tasmanian Forest Managers Good Neighbour Protocol; and
- Good Neighbour Charter for Commercial Tree Growing in the Green Triangle Region of South East Australia and South West Victoria.

Dispute Resolution

All complaints and disputes relating to Timberlands Pacific's activities are taken very seriously. Should the need arise, the Complaints and Dispute Resolution procedure will be followed. It outlines the steps to be taken to resolve the situation between parties. A copy of the procedure is available on request at the discretion of the CEO by emailing enquiries@tppl.com.au.

Illegal Activities

The most common illegal activities on the estates are dumping of household rubbish, abandoned vehicles, firewood and fuel theft, vandalism and unplanned fire.

Rubbish

Dumping of household rubbish occurs on estate land. It poses a health and safety risk to employees, contractors and other forest users. Rubbish can pollute streams and waterways, contaminate the soil, spread weeds, increase the fire risk and can be ingested by native fauna.

Rubbish found by employees or contractors is recorded and any identifiable evidence of the offender is passed onto the local authorities.

Unplanned Fire

Every year there are multiple fires within the estates. Many of these are deliberate acts of arson or fires accidentally started by careless forest users. Unplanned fires are highly dangerous to surrounding communities and are a significant cost to the estates.

To reduce the number of unplanned fires within the estates, employees and contractors monitor the weather, particularly during the fire season and follow strict fire prevention procedures on high fire danger days. Fire weather warnings are issued to the public to increase awareness and deter entry to the estates on these days. All users of the estates are encouraged to report suspicious activities to the authorities and report smoke immediately to **000**.

The estates are inspected annually prior to the fire season. Firebreaking, slashing and fuel reduction burns are planned and implemented to reduce the flammable material on boundaries and in high risk areas.

Other

Theft and machinery vandalism can have a severe financial impact on the business. Police are notified immediately when this type of activity occurs within the estates.

Firewood collection is not permitted on the estates and is considered theft.

Hunting is not a permitted activity on the estates. Unauthorised hunting poses a significant risk to all forest users.

Contact details

The Management Team

Contact	Position
Steven Brown	Chief Executive Officer
Robin Dickson	Tree Crop Manager (Tasmania)
Kelly Williamson	Tree Crop Manager (Mount Gambier)
Jim Knott	Technical Manager
Lynette Broomby	Chief Financial Officer
Tammy Auld	Customer and Regional Manager
Emma-Kate Griffiths	People and Culture Manager

Office Address

Penola Plantations

10 Helen St, Mount Gambier
 South Australia
 PO Box 30, Mount Gambier 5290
 Ph (08) 8724 2000

Taswood Estate

Level 1, 113 Cimitiere St, Launceston
 Tasmania
 PO Box 865, Launceston 7250
 Ph (03) 6345 3200

Email

enquiries@tppl.com.au

Website

<http://www.tppl.com.au>