



TIMBERLANDS  
Pacific

**SAFETY  
FIRST  
ALWAYS**



# Conditions of entry for community use

## To ensure you are safe when you are in our forests:

- **Do not enter active forest operations.** Active operations will be demarcated with signage and or tape, indicating that it is not safe for you to enter
- Follow all safety/advisory signs where provided
- Leave gates how you found them
- Carry an appropriate first aid kit and know how to use it
- Contact us if you see something that doesn't look right e.g. rubbish dumping, damaged roads etc.

## Things to remember while visiting our forests:

- Respect cultural, heritage, and environmental values. Stop look, but never disturb or remove
- Keep to formed vehicle tracks
- Keep the environment clean. Carry your own, and any other rubbish back out
- Do not rely on mobile phone coverage
- Do not attempt to drive around slips or washouts if the ground does not look stable and there is insufficient room; stay well clear of the hazard
- Plan your trip and lodge trip details with responsible persons.

To help keep you safe, we recommend that you contact our Launceston Office before entering the forest. We can provide advice on what operations are in progress in the areas you wish to visit.

# Driving in the forest

When driving in operational forests, it is quite normal for visitors using these roads to encounter large vehicles including log trucks, prime movers and other industrial vehicles.

Roads where forest operations are occurring or where there are safety issues may be closed to the public.

Remember, you must abide by all laws and regulations for vehicles, including 4 wheel driving, motor bikes and ATV's that apply to public lands.

## REMEMBER IN THE FOREST

1. Always drive with caution
2. Only drive if licensed
3. Drive with your lights on
4. Abide by all laws and regulations
5. Watch for changing road conditions



TIMBERLANDS  
Pacific

**SAFETY  
FIRST  
ALWAYS**

# RESTRICTIONS

For safety reasons, Timberlands Pacific may temporarily restrict access to a forest, including:

- When forestry operations are in progress
- During times of high fire risk
- During other adverse weather conditions.

We may also restrict access in areas where entry may cause environmental impacts.

Fires are a significant risk to our forests and the people who live near them. To prevent fires from occurring the lighting of open-air fires **is prohibited in our Estates.**

Smoking is restricted to safe areas such roads and bare mineral earth and is prohibited during fire season.

## Hunting

No hunting is permitted within our forests, even if permits are obtained externally.

Recreational hunting impacts on year-round game control programs and does not help to reduce wallaby or possum numbers in a meaningful way.

## Firewood

No firewood collection is permitted within our forests.

Timberlands Pacific takes our role as a neighbour seriously and are subscribed to the Good Neighbour Protocol

# Common Hazards

Plantation forests contain hazards that may harm you. To keep yourself as safe as possible, please make yourself familiar with some of the commonly occurring hazards listed below. The controls aim to prevent harm or damage.

## Terrain may be steep, unstable, slippery, uneven, rocky, loose underfoot, have cliffs/bluffs

Wear appropriate footwear with adequate tread. Keep within your physical limits when walking in the forest, negotiating forest terrain can be strenuous. Don't jump or slide down banks.

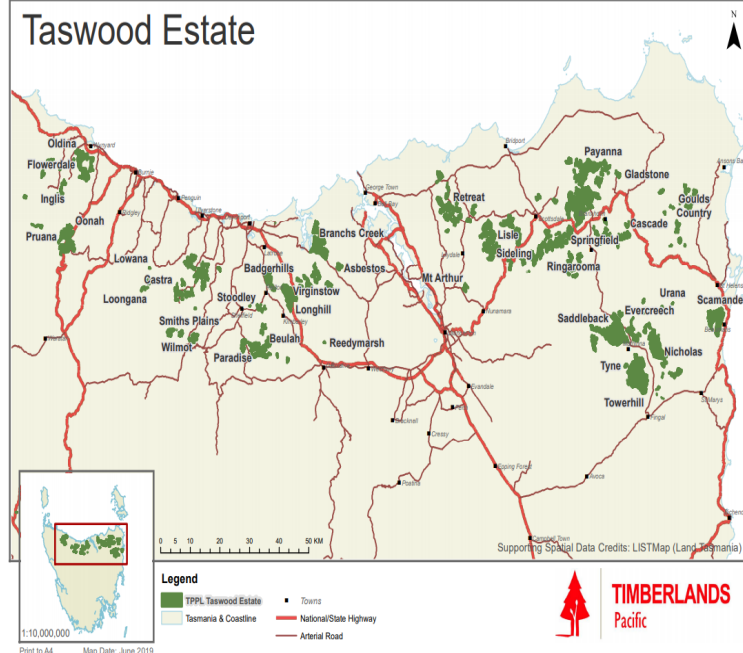
## Mine shafts and exploration holes

Do not enter areas that are taped off. Walk cautiously if in a forest known to have a history of mining.

## Nettles, pollens, ants, bees and wasps, jack jumpers and leeches

Avoid exposure when conditions are unfavourable or wear appropriate clothing. Move cautiously when walking in the forest. Carry antidotes if you have allergies.

In an emergency, to report an accident or fire call 000 or 112



Timberlands Pacific regularly assesses the range of impacts our Estates may have on communities in which we operate.

This is known as a Social Impact Assessment.

A copy is available at [www.tppl.com.au](http://www.tppl.com.au)

## Launceston Office (Main Office)

Level 1, 113-115 Cimitiere Street  
Launceston, Tasmania

## Postal Address:

PO Box 865  
Launceston, Tasmania 7250

Phone: +61 3 6345 3200

Email Enquiries: [enquiries@tppl.com.au](mailto:enquiries@tppl.com.au)

Updated 23 April 2020